



# GIMAP5 Polyclonal Antibody

<b>Catalog No</b>	YP-Ab-16165
<b>Isotype</b>	IgG
<b>Reactivity</b>	Human;Rat;Mouse;
<b>Applications</b>	WB;IHC;IF;ELISA
<b>Gene Name</b>	GIMAP5
<b>Protein Name</b>	GTPase IMAP family member 5
<b>Immunogen</b>	The antiserum was produced against synthesized peptide derived from human GIMAP5. AA range:231-280
<b>Specificity</b>	GIMAP5 Polyclonal Antibody detects endogenous levels of GIMAP5 protein.
<b>Formulation</b>	Liquid in PBS containing 50% glycerol, 0.5% BSA and 0.02% sodium azide.
<b>Source</b>	Polyclonal, Rabbit,IgG
<b>Purification</b>	The antibody was affinity-purified from rabbit antiserum by affinity-chromatography using epitope-specific immunogen.
<b>Dilution</b>	WB: 1/500 - 1/2000. IHC: 1/100 - 1/300. ELISA: 1/20000.. IF 1:50-200
<b>Concentration</b>	1 mg/ml
<b>Purity</b>	≥90%
<b>Storage Stability</b>	-20°C/1 year
<b>Synonyms</b>	GIMAP5; IAN4L1; IAN5; IMAP3; GTPase IMAP family member 5; Immunity-associated nucleotide 4-like 1 protein; Immunity-associated nucleotide 5 protein; IAN-5; hIAN5; Immunity-associated protein 3
<b>Observed Band</b>	35kD
<b>Cell Pathway</b>	Lysosome membrane ; Single-pass type IV membrane protein . Endosome, multivesicular body membrane ; Single-pass type IV membrane protein . Endosome membrane ; Single-pass type IV membrane protein . The mitochondrial localization originally reported was observed with C-terminally tagged protein and was not confirmed in later publications. .
<b>Tissue Specificity</b>	Widely expressed with high levels in lymph node and spleen (PubMed:14724691). High expression found in T lymphocytes, including CD4 and CD8-positive T-cells, and monocytes (PubMed:14724691, PubMed:29382851). Very low expression levels in B-lymphocytes (PubMed:14724691).
<b>Function</b>	function:Required for mitochondrial integrity and T-cell survival. May contribute to T-cell quiescence.,similarity:Belongs to the IAN GTP-binding protein family.,tissue specificity:Widely expressed with high levels in lymph node and spleen. High expression found in CD4 and CD8-positive T-cells and monocytes with very low levels in B-lymphocytes. Highly expressed in B-lymphocyte-derived neoplasms.,
<b>Background</b>	This gene encodes a protein belonging to the GTP-binding superfamily and to the immuno-associated nucleotide (IAN) subfamily of nucleotide-binding proteins.



In humans, the IAN subfamily genes are located in a cluster at 7q36.1. This gene encodes an antiapoptotic protein that functions in T-cell survival. Polymorphisms in this gene are associated with systemic lupus erythematosus. Read-through transcription exists between this gene and the neighboring upstream GIMAP1 (GTPase, IMAP family member 1) gene. [provided by RefSeq, Dec 2010],

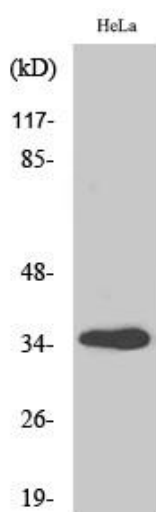
**matters needing attention**

Avoid repeated freezing and thawing!

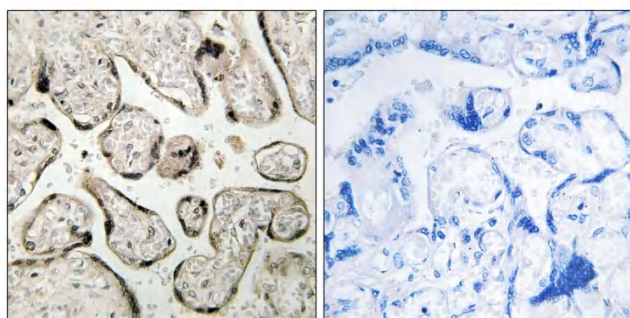
**Usage suggestions**

This product can be used in immunological reaction related experiments. For more information, please consult technical personnel.

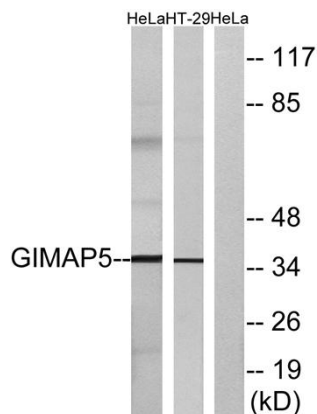
**Products Images**



Western Blot analysis of various cells using GIMAP5 Polyclonal Antibody



Immunohistochemistry analysis of paraffin-embedded human placenta tissue, using GIMAP5 Antibody. The picture on the right is blocked with the synthesized peptide.



Western blot analysis of lysates from HeLa and HT-29 cells, using GIMAP5 Antibody. The lane on the right is blocked with the synthesized peptide.